



Get to Know GIGA



GIGA

Keio University SFC
GLOBAL INFORMATION AND
GOVERNANCE ACADEMIC PROGRAM

Table of Contents

-
1. Keio and SFC in detail

 2. Academics - Program we offer -

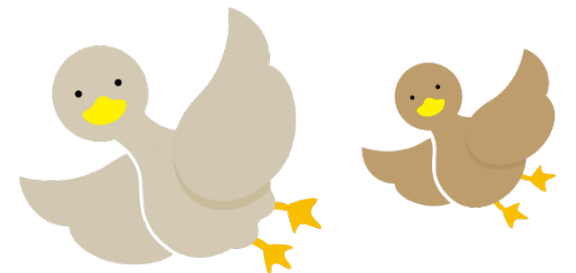
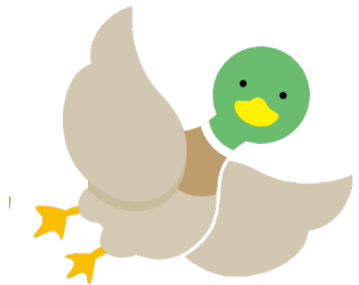
 3. Career outcomes

 4. On-campus dorm available

 5. Campus Safety

 5. Student Life & Health

 6. SFC Research



A photograph of a red brick building with a prominent tower, likely a Keio University building. The building is partially obscured by large, flowering cherry blossom trees in the foreground. A white stone balustrade runs along the bottom right of the frame. The text "Keio University" is overlaid in a large, black, cursive font across the center of the image. In the bottom left corner, two people are visible walking on a path.

Keio University

Keio University

- Japan's First Modern institution of higher learning
 - In 2024, ranked 188th globally, placed in the top 12.5% of the 1,503 institutions evaluated
- <https://www.keio.ac.jp/en/>

Founded in 1858



Founder

Yukichi Fukuzawa
(1835–1901)

<https://youtu.be/IrwHfGHb2po>



Academic Staff	3,000
Enrollment	33,000
International Students	2,000 ↑

Philosophy

Jitsugaku (実学)

Jitsugaku is a way of learning about the world pursued by Keio University's founder Yukichi Fukuzawa through the application of reason, observation, and verification, and it stemmed from his desire to break free of the Confucian ideals that informed scholarship in 19th-century Japan. *Jitsugaku* is science in the truest sense of the word and a powerful tool in Keio University's never-ending search for practical solutions to real-life problems.

6 Campuses



Keio University



10 Undergraduate Faculties and 14 Graduate Schools

Undergraduate

- Letters
- Economics (PEARL)
- Law
- Business and Commerce

- Science and Technology

- School of Medicine
- Nursing and Medical Care
- Pharmacy

- Policy Management (GIGA)
- Environment and Information Studies (GIGA)

Graduate

- Letters
- Economics
- Law
- Human Relations
- Business and Commerce
- Business Administration

- Science and Technology

- Media Design
- Media and Governance
- Law School
- System Design and Management

- Medicine
- Health Management
- Pharmaceutical Sciences

Degree Programs Offered in English
keio.ac.jp/en/academics/programs-offered-in-english/



Shonan Fujisawa Campus(SFC)

SFC opened in 1990 as Keio's 5th campus to educate students to resolve complex issues by integrating the fields of technology, science, design, business, innovation, international relations, and policy. At SFC, you will learn to think critically and creatively, and to meet social challenges that force us to look beyond conventional ideas.

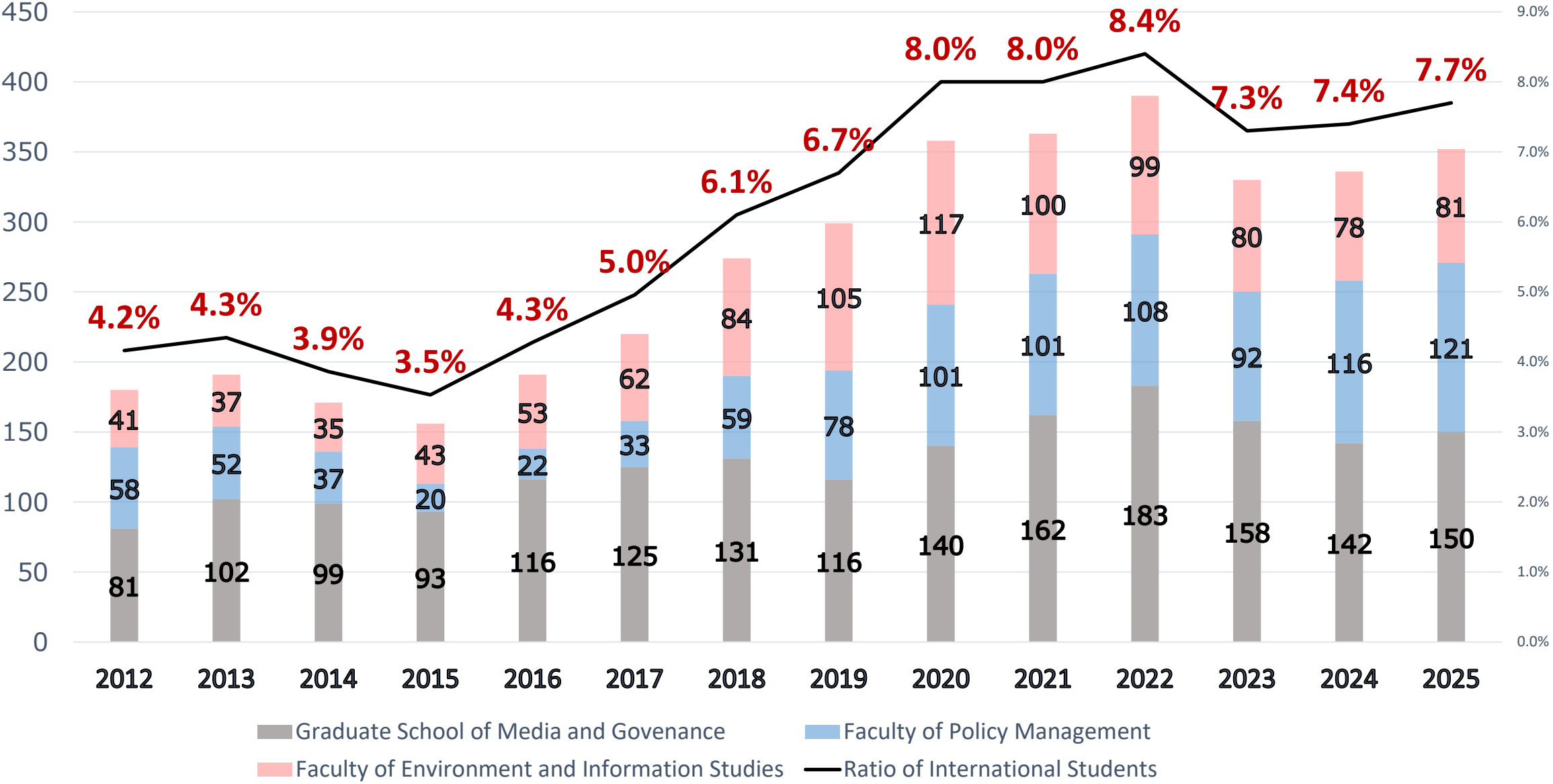
GIGA: English-based BA Degree Program

sfc.keio.ac.jp/en/academics/pmei/giga/

Offered by the Faculties of Policy Management and Environment and Information Studies

The GIGA (Global Information and Governance Academic) Program is a 4-year undergraduate degree program at SFC taught in English. GIGA students can take courses across the Faculty of Policy Management and the Faculty of Environment and Information Studies offered in English and Japanese.

International Students at SFC



International Students at SFC

Twin Faculties

★ Policy Management

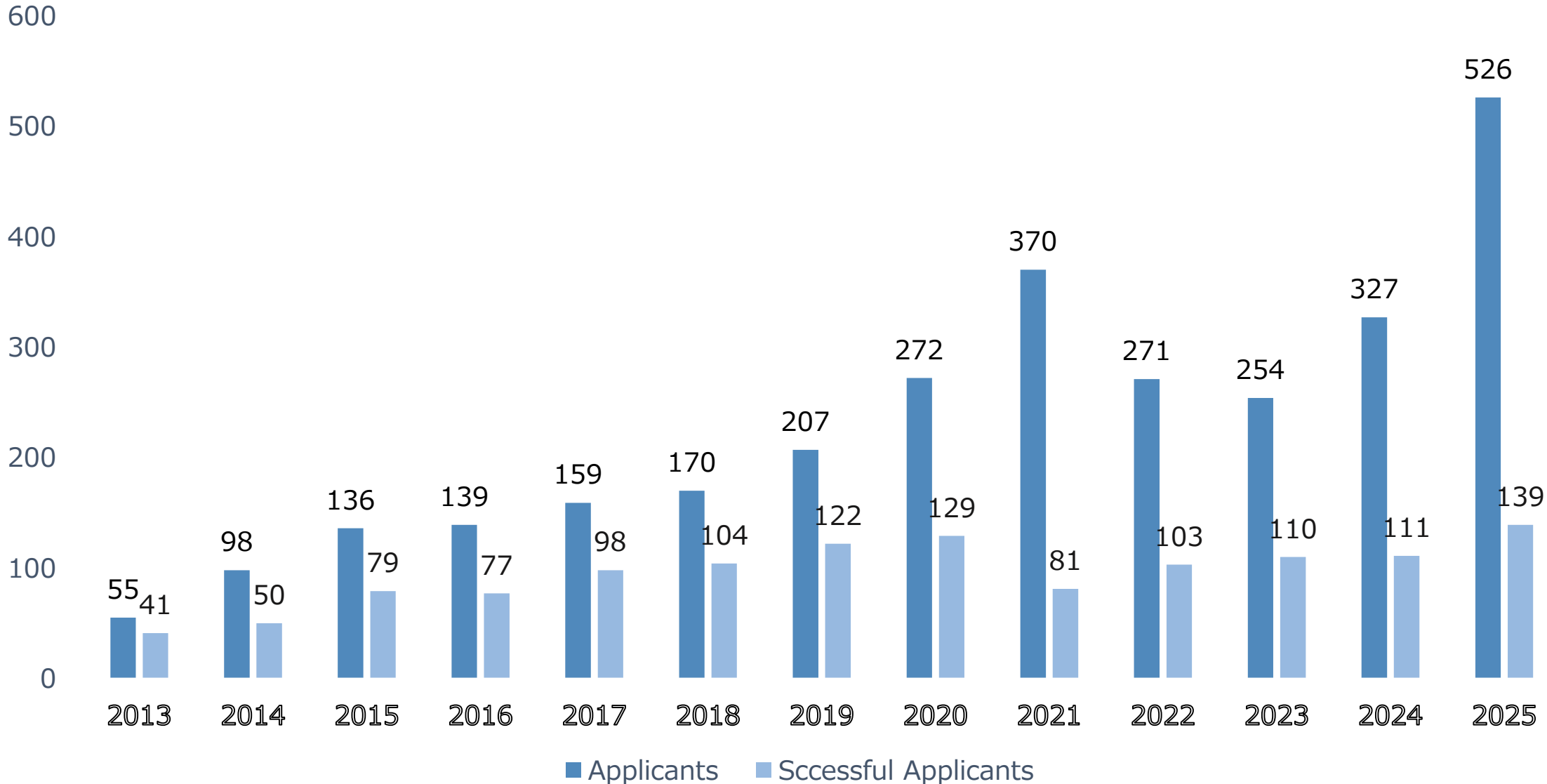
★ Environment and Information Studies

	P/M	E/I
China	36	24
Korea	32	9
Indonesia	11	12
Vietnam	11	10
Taiwan	6	3
Philippines	3	1
Thailand	1	5
United States	3	3
India		2
Russian Federation	1	
Singapore	1	1
German	2	1
Hong Kong	1	1
Kyrgyz Republic		3
Mongolia	2	
Uzbekistan	2	1

	P/M	E/I
Saudi Arabia		1
United Arab Emirates		1
Bolivia		1
Nepal	1	
Australia	1	
Bangladesh		1
Cameroon		1
Eritrea	1	
Greece	1	
Turkey	1	
Norway	1	
Sri Lanka		1
France	1	
Rumania	1	
Myanmar	1	
Total	121	81

As of November 2025

Applicants for the **GIGA Program**



A computer lab with students working at desks with multiple monitors. The students are focused on their work, and the room is filled with the sound of keyboards and the glow of screens. The text 'Academics -program we offer-' is overlaid on the image in a large, black, cursive font.

Academics

-program we offer-

Curriculum Structure

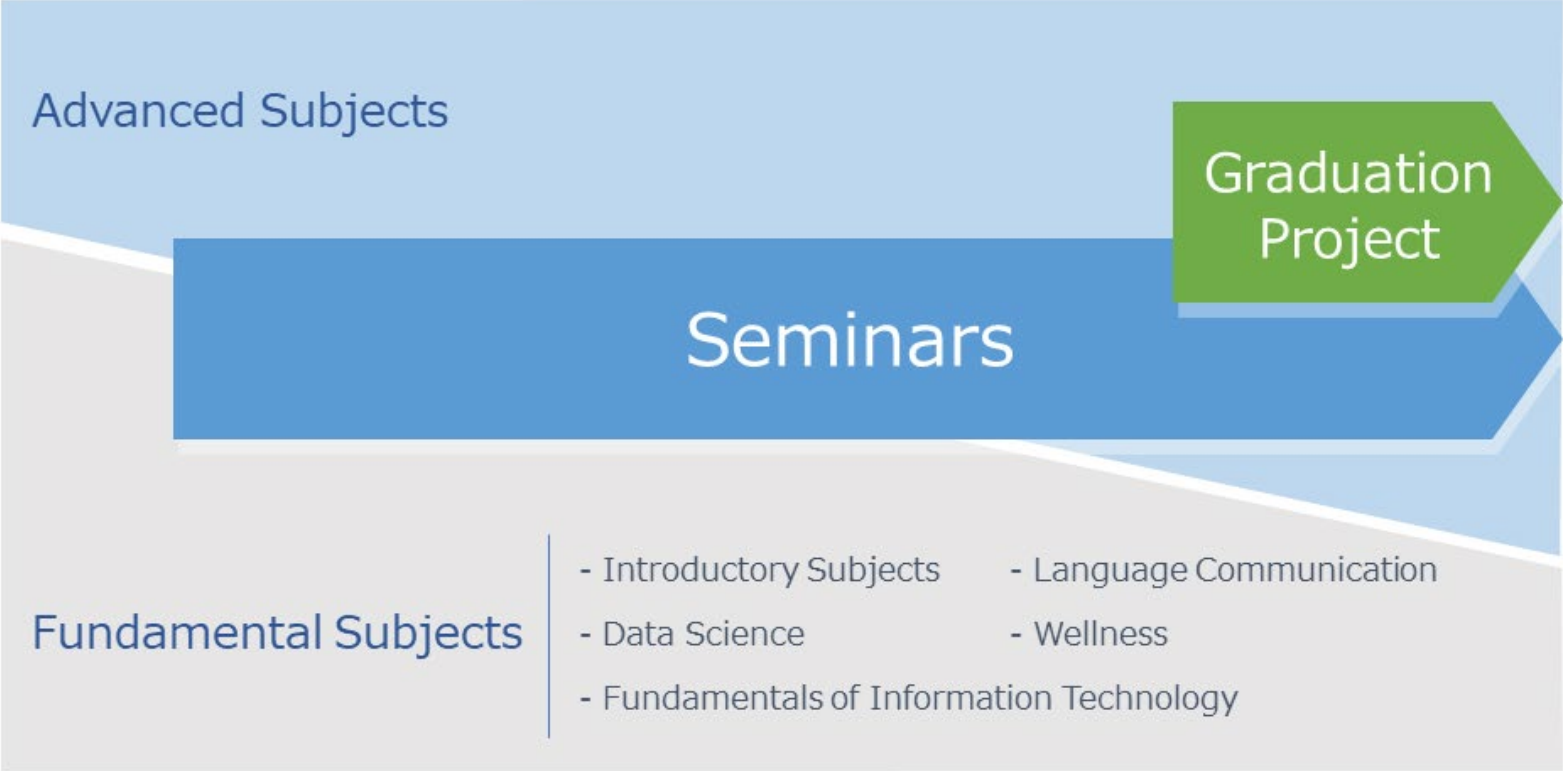


Students develop fundamental abilities that establish a solid base for future learning.

Students explore paths to specialized knowledge while continuing to develop fundamental abilities.

Students take Advanced Subjects and become more involved in Seminars.

Students work on a Graduation Project as the culmination of their learning.



Super Flexible Campus



Fast Track Options for Graduation

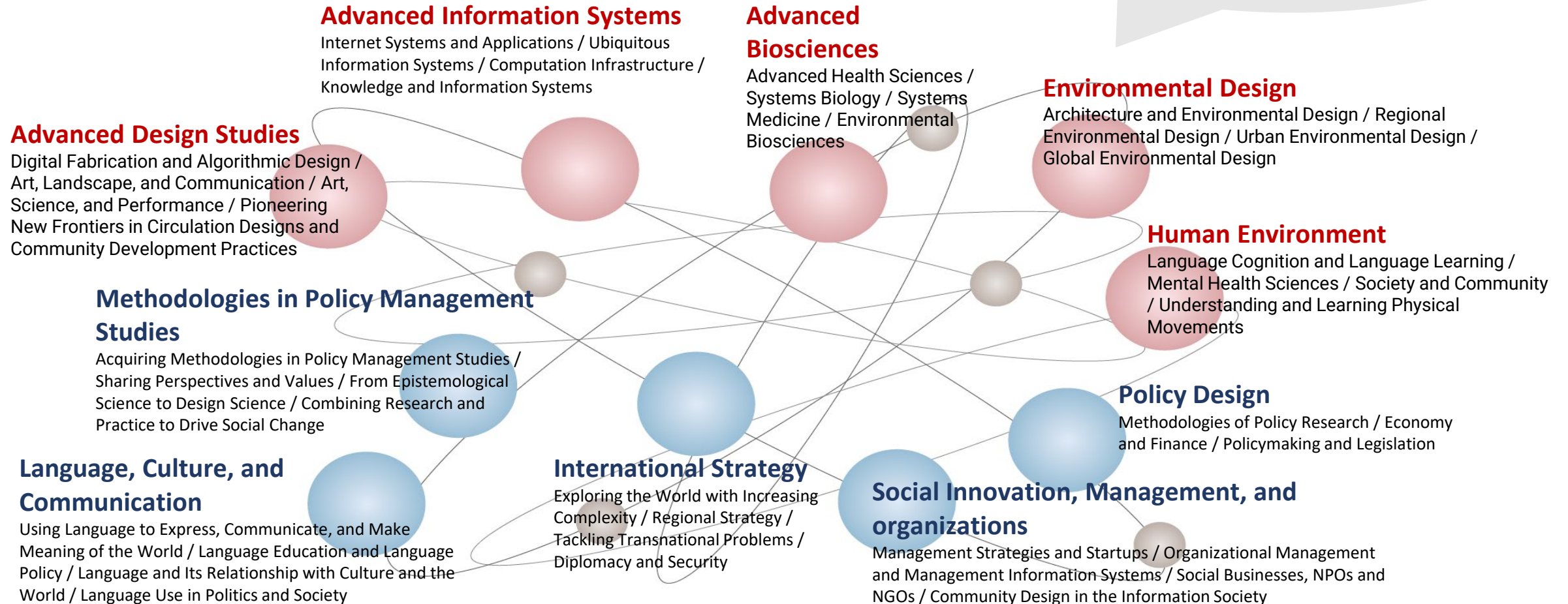
3.5 Year Early Graduation System:
students.keio.ac.jp/en/sfc/pmei/procedure/early-grad/

Bachelor's-Master's 4 Year Integrated Program:
students.keio.ac.jp/en/sfc/pmei/procedure/4yr-integrate-pgm/

Fields of Research at SFC

Faculty of Environment and Information Studies

- Able to earn degree in English
- Interdisciplinary approach
- Opportunity to learn Japanese
- Able to choose courses in both English and Japanese



Faculty of Policy Management

Language Communication Courses at SFC

10 Languages

- English
- German
- French
- Spanish
- Italian
- Chinese
- Korean
- Malay-Indonesian
- Arabic
- Russian

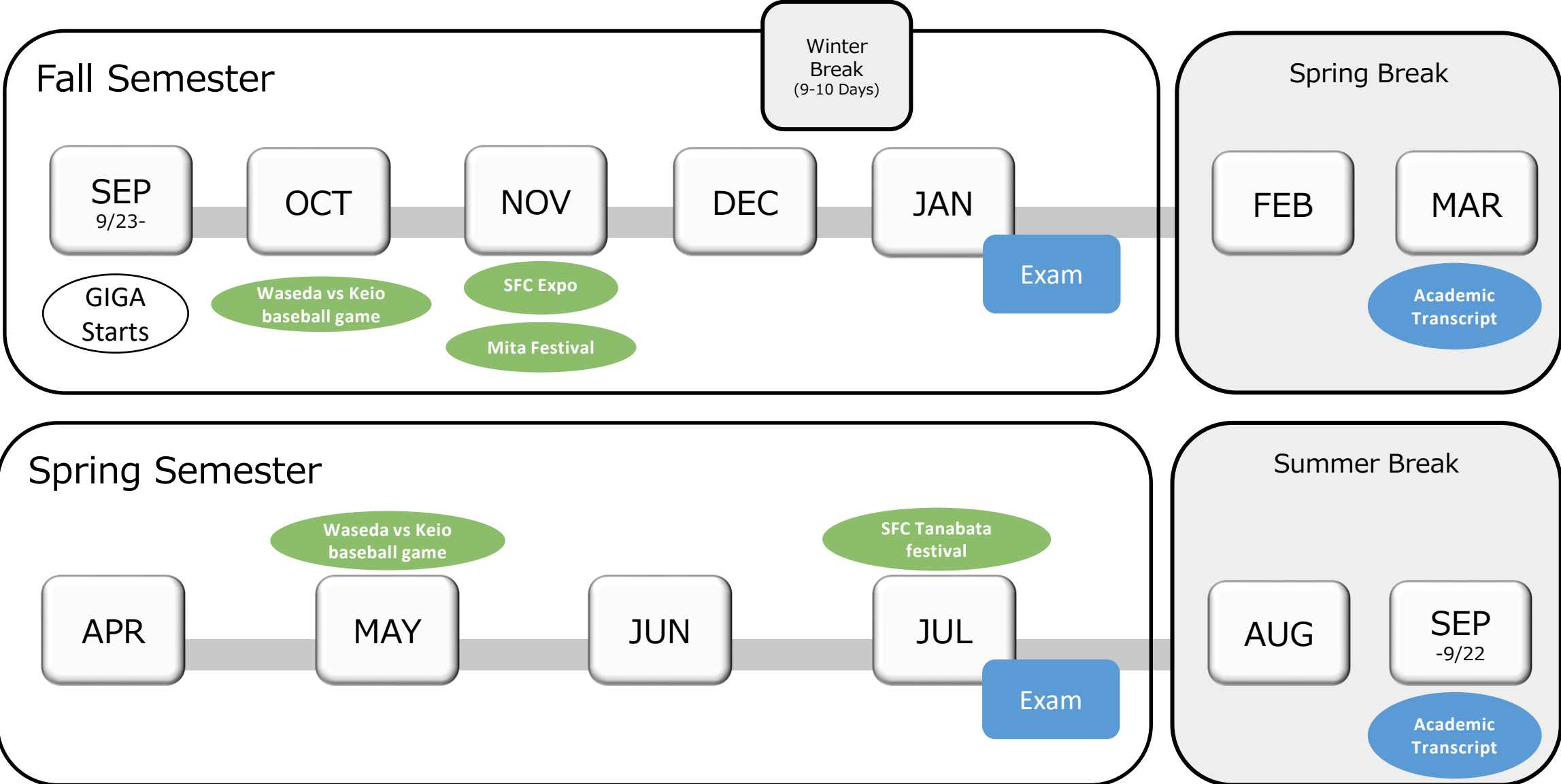
+ Japanese

- Wide array of support for Japanese language acquisition and living in Japan for international and returnee students.
- Professors and teaching assistants of Japanese LAB will support your learning!



<https://language.sfc.keio.ac.jp/japanese/>

Academic Calendar



Grading System

A Grade Report showing “advancement to the next year,” “graduation,” etc., will be sent out to student’s guarantor **by online** in **September** for the Spring Semester and **March** for the Fall Semester.

Academic grades are shown as S, A, B, C or D.

* S, A, B, and C are passing grades and D is a failing grade.

For certain courses, grades are given as **P** and **F** representing “pass” and “failure,” respectively.

Furthermore, a **G** (approved) grade may be given for courses for which credits are transferred from the university where the student studied abroad.

Grading System

GPA (Grade Point Average)

【Calculation Method】

GP (Grade Point) **S: 4.0 A: 3.0 B: 2.0 C: 1.0 D:0.0**

(number of "S" credits) x 4 + (number of "A" credits) x 3 + (number of "B" credits) x 2 +
(number of "C" credits) x 1 + (number of "D" credits) x 0

Total number of credits awarded (SABCD)

- Courses with grades of **P**, **F** and **G** and Credits from Optional Subjects are **not** to be included.
- Decimals less than 3 are rounded off.

Advancing to the Second Year at SFC

Students must meet both of the following requirements in order to advance to the Second Year:

- 1. The student has been enrolled for **at least two semesters** since entering the University (excluding periods of temporary leave of absence) and has earned **at least 30 credits** (excluding credits earned in Optional Subjects).
- 2. The student has earned all of the following credits:

Faculty of Policy Management	Faculty of Environment and Information Studies
Policy Management Studies 1 credit	Environment and Information Studies 1 credit
Physical and Mental Health for Campus Life 1 credit	Physical and Mental Health for Campus Life 1 credit
Physical Education 1 1 credit	Physical Education 1 1 credit

Student Exchange Program (1 year)



(As of February 2016)

Short-term Study Abroad Program

If you are interested in studying abroad during studies, please join the study abroad fair!

Summer (AUG)

	Country	Quota	Term (week)
University of Notre Dame	USA	20	2
College of William & Mary	USA	40	2
University of Cambridge, Downing College	UK	60	4
University of Oxford, Christ Church College	UK	50	4
University of Oxford, Lincoln College	UK	20	2

Spring (FEB)

	Country	Quota	Term (week)
University of Notre Dame	USA	20	2
Sciences Po	France	20	4
The University of Sydney	Australia	20	3
Tufts University	UK	15	2
Singapore Management University	Singapore	15	3



Academic Fee at SFC and Scholarships

As of AY 2026

Faculty of Policy Management	JPY1,581,250
Faculty of Environment and Information Studies	JPY1,581,250
Graduate School of Media and Governance	JPY1,650,600

Paying Academic Fees:

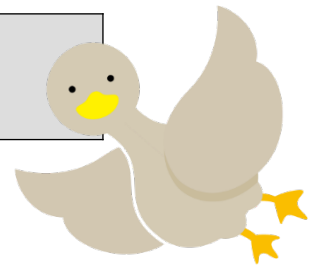
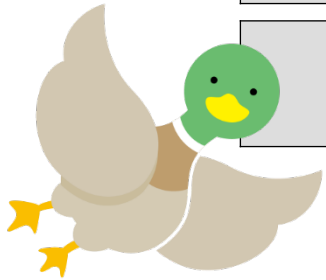
<https://www.keio.ac.jp/en/admissions/fees/>

Application for Tuition Deferment:

students.keio.ac.jp/en/com/scholarships/tuition/extension.html

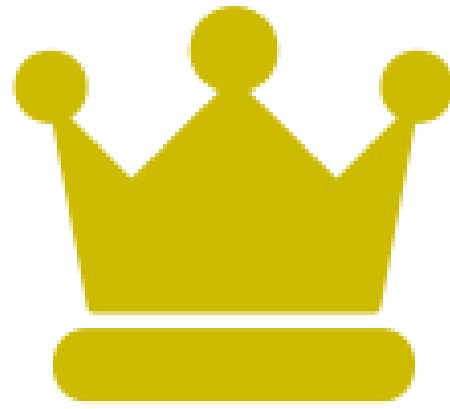
Scholarships Information:

students.keio.ac.jp/en/sfc/scholarships/unique/





Career

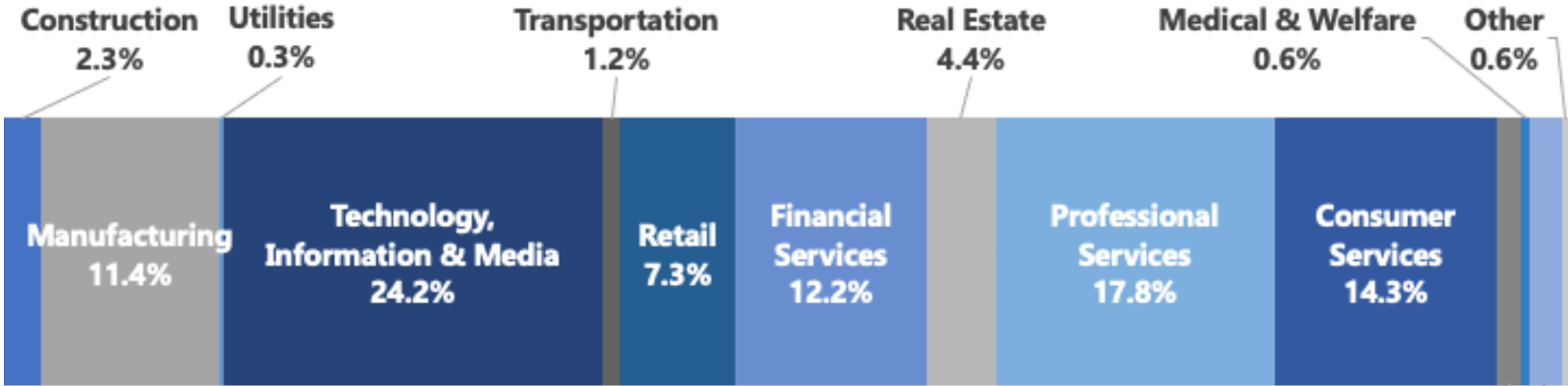


No.1

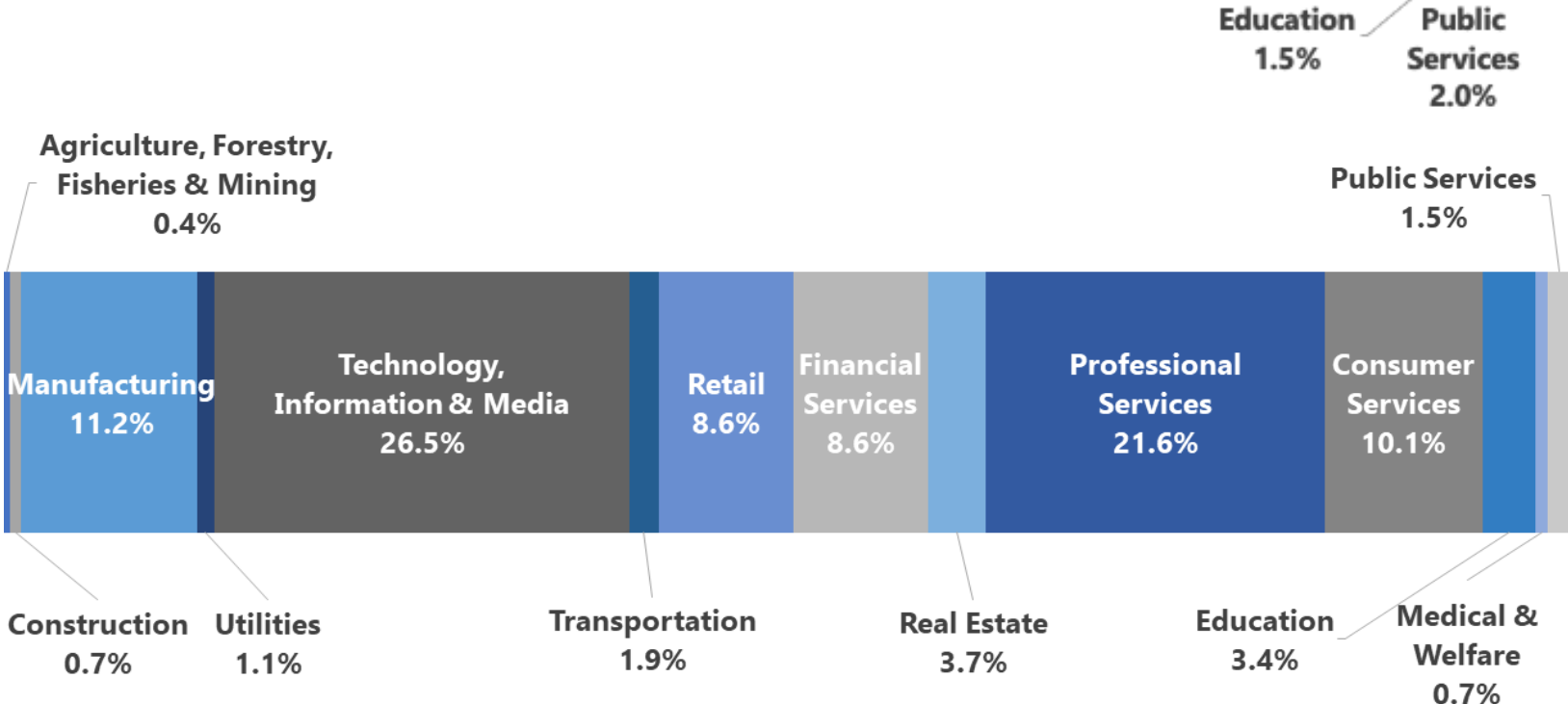
- **In the number of successful examinees for the Japanese National CPA Examinations for 50 consecutive years (2024)**
- **In the number of successful examinees for the Japanese National BAR Examination (2024)**
- **For Grants-in-Aid for Scientific Research (among private universities)**
From the 2026 University Ranking (Asahi Shimbun Publications Inc.)
- **For CEOs of companies listed on the Prime Market Section of the Tokyo Stock Exchange**
From the 2026 University Ranking (Asahi Shimbun Publications Inc.)

SFC Graduates

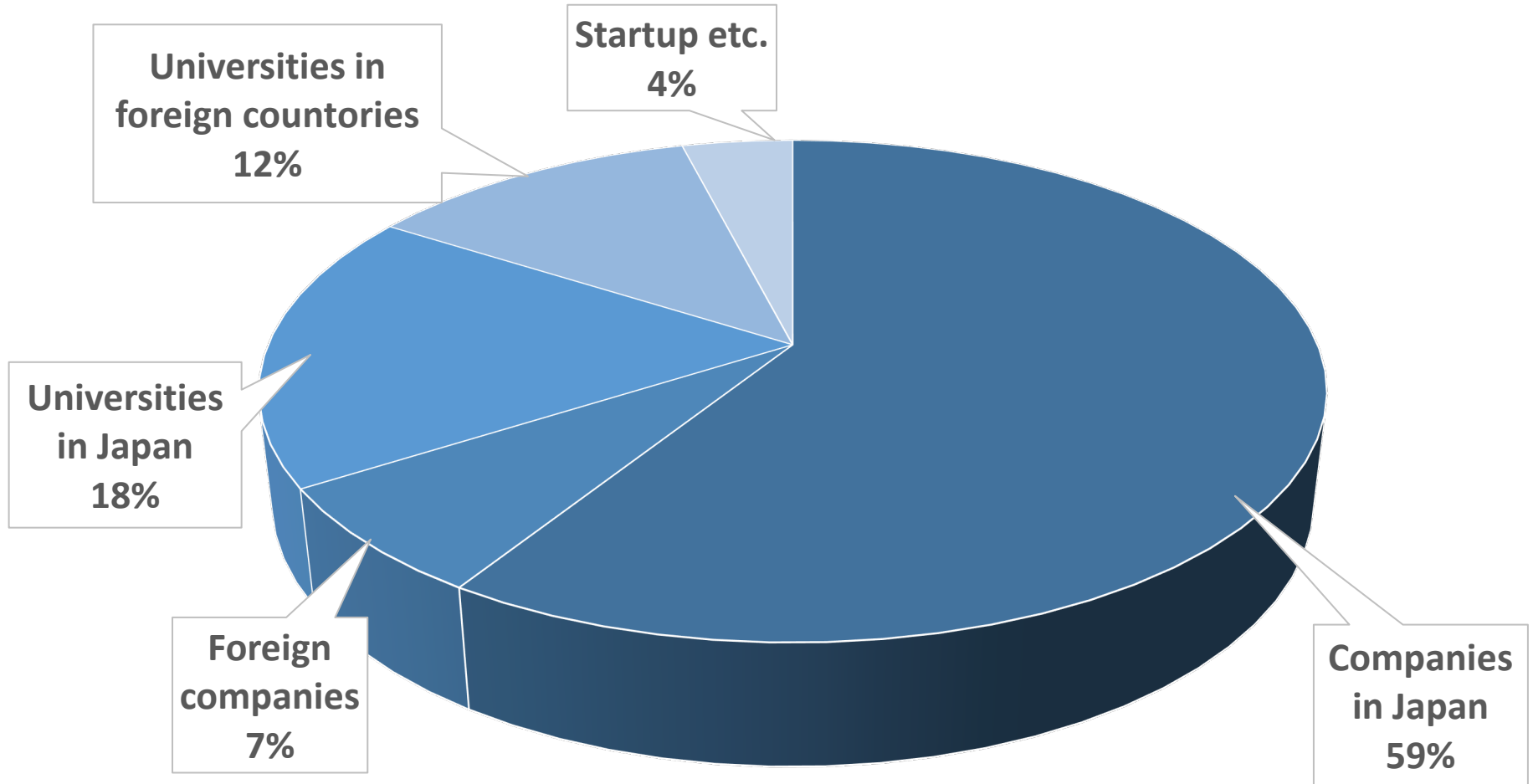
Faculty of Policy Management



Faculty of Environment and Information Studies




GIGA Program Graduates



As of September 2025

*Only those whose future plans are confirmed at the time of graduation

Advancement to Graduate School of SFC Students

Name of School	Country	Name of School	Country	Name of School	Country
Columbia University	USA	Delft University of Technology	Netherlands	Keio University	Japan
Cornell University	USA	Graduate Institute of Geneva	Switzerland	University of Tokyo	Japan
Harvard University	USA	University of Zurich	Switzerland	Waseda University	Japan
Pratt Institute	USA	Lund University	Sweden	Kyoto University	Japan
Stanford University	USA	Institute for Advanced Architecture in Catalonia	Spain	Tsukuba University	Japan
University of Southern California	USA	Technical University of Munich	German	Hitotsubashi University	Japan
University of Alberta	Canada	Dresden University of Technology	German	Hokkaido University	Japan
University of British Columbia	Canada	ESCP Business School	France	Nagoya University	Japan
King's College London	UK	ESPOL, Lille Catholic University	France	Kyusyu University	Japan
London School of Economics	UK	HEC Paris	France	Chiba University	Japan
SOAS University of London	UK	Paris Diderot University (Paris 7)	France	Osaka University	Japan
The University of Edinburgh	UK	Paris Nanterre University (Paris 10)	France	Tohoku University	Japan
University College London	UK	Royal Academy of Fine Arts Antwerp	Belgium	And more...	
University of Bath	UK	University of Lisbon (ISEG)	Portugal		
University of Essex	UK	The University of Melbourne	Australia		
University of Exeter	UK	University of Sydney	Australia		
University of Glasgow	UK	Seoul National University	South Korea		
University of Sheffield	UK	Nanyang Technological University	Singapore		
University of Warwick	UK	Beijing Foreign Studies University	China		
University of York	UK	Tsinghua University	China		
Mendrisio Academy of Architecture	Italia	Hong Kong University of Science and Technology	China		
University of Padua	Italia	The Chinese University of Hong Kong	China		

Support for Job-Hunting @SFC CDP Office

Employment assistance
events

Assistance with
application process

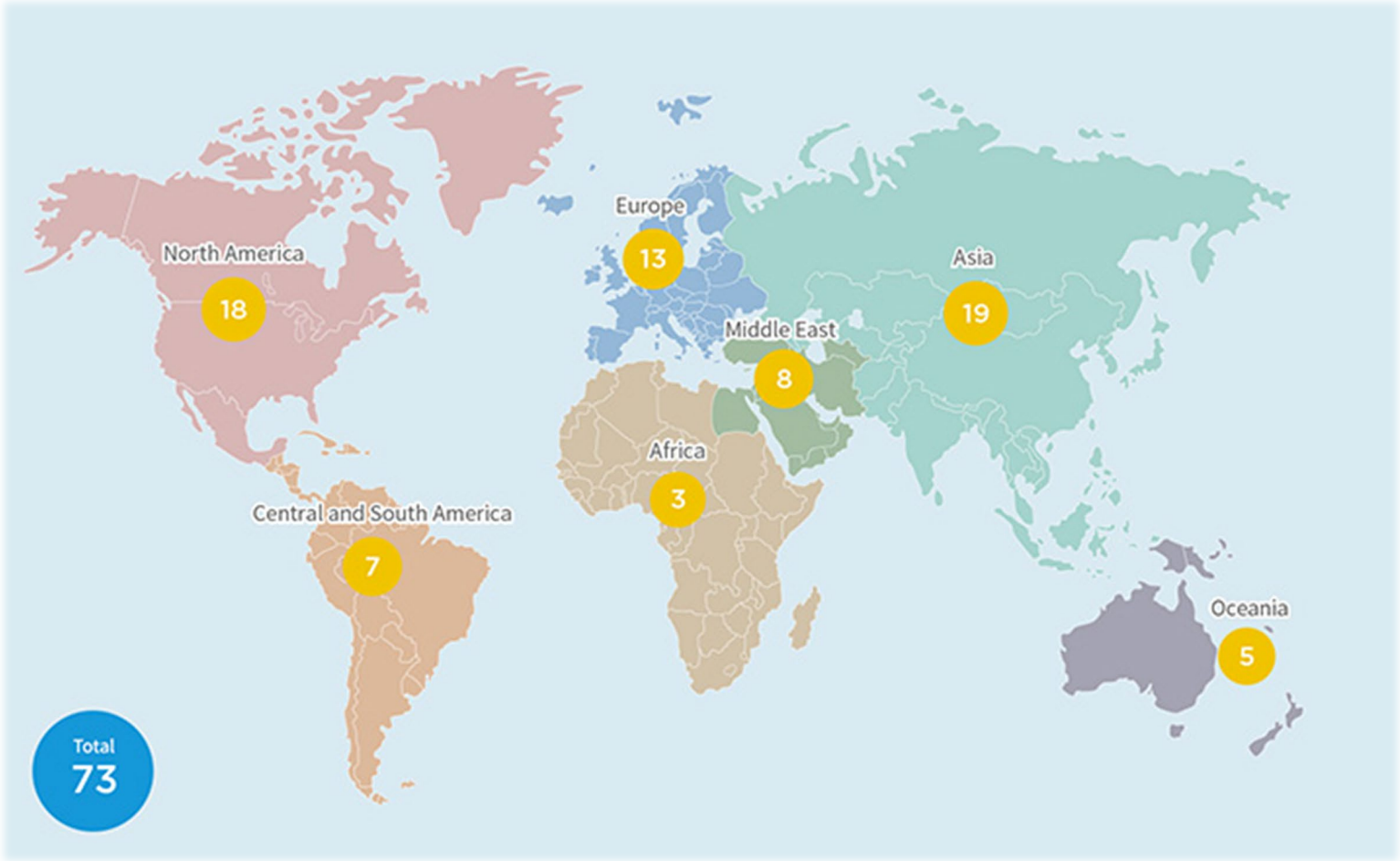
Introduction to Keio
alumni

Information about job
and career fairs


Information about job
offers

<https://www.students.keio.ac.jp/en/sfc/career/case/intl-student.html>

Global Alumni Network “Mita-Kai (三田会)”



Keio University has around 410,000 alumni. Keio’s alumni are known for their sense of solidarity with the university, and many go on to join Mita-kai to befriend and interact with other Keio graduates. There are currently around 800 domestic and around 70 overseas Mita-kai*. Keio University alumni gather around the world to participate in a variety of activities, including support for younger generations of Keio students.


AROUND **410,000**
Graduates of Keio University


AROUND **800**
Mita-kai in Japan


AROUND **70**
Mita-kai Abroad

Global Alumni Network

Powerful Global Alumni Network

- **800+** domestic and **75+** overseas “**Mita-Kai**” alumni organizations
- **410,000** alumni active in all areas of society, including politics, finance, business, media, art and sports

Alumni include

- **2** Astronauts
- **4** Prime Ministers and many Cabinet Ministers
- **10,700+** CEOs of companies (e.g., President of Toyota)
- **100** CEOs of foreign-affiliated companies
- Distinguished Overseas Figures (e.g., Former Governor of The Bank of Thailand; Vice Chairman of Samsung; professors; deans and provosts of many universities, etc.)

An aerial photograph of a modern university campus. The image shows several multi-story, grey concrete buildings with balconies and large windows. A central walkway runs through the middle of the campus, flanked by green lawns and young trees. The sky is clear and blue. The text "On-Campus Housing" is overlaid in a large, black, handwritten-style font across the center of the image.

On-Campus Housing

On-Campus Housing: H Village@SFC

Monthly fees

JPY 109,250 (USD 825)

The fees include meals, electricity, water charges and internet usage fee

<https://h-village.sfc.keio.ac.jp/en/>



Accommodations near SFC

- **Dormy Shonan Fujisawa2**
- **Shonan Fujisawa International Dormitory**
- **On-Campus Housing: H(*Eta*) Village**

There is the **special discount (30% off)** for SFC international students (Lottery).

Details: students.keio.ac.jp/en/sfc/life/intl-student/notice.html

The newest on-campus
dormitory opened
at SFC in 2023!



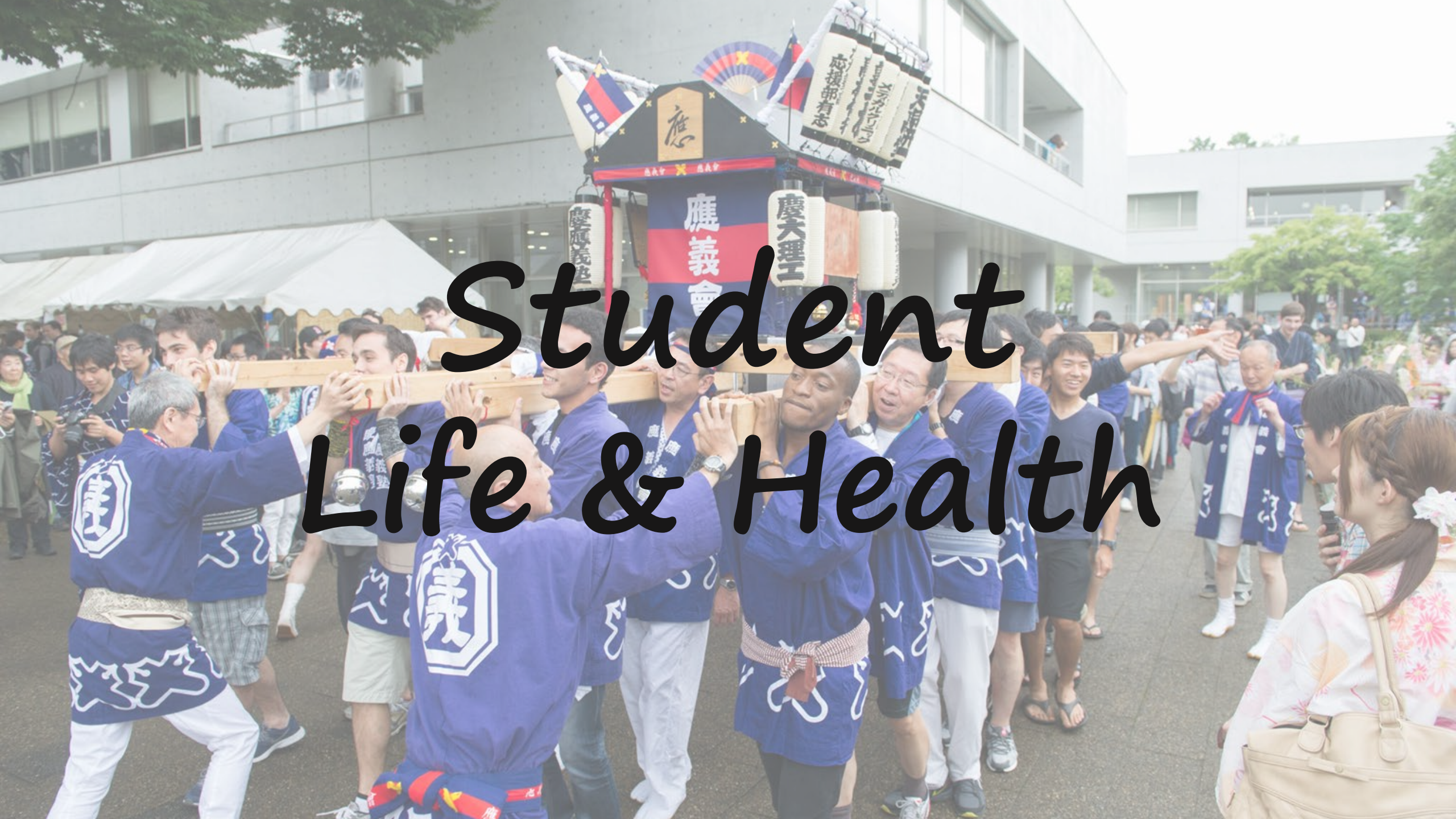
A photograph of a campus scene during autumn. The trees are in various stages of color change, from green to bright yellow and orange. A tall, modern light pole stands in the foreground on the left. In the background, a large, abstract sculpture is visible among the trees. The sky is a clear, bright blue. The text "Campus Safety" is overlaid in a large, black, cursive font across the center of the image.

Campus Safety

Campus Safety

- The Shonan Fujisawa Campus lies in the suburbs of Tokyo's safest cities.
- Security Services patrol our campuses 24 hours.
- Disaster drill is available upon arrival, which is organized by prof. Satoko Oki's kenkyukai.
- We have a professor specializing in seismology, disaster information, safety education, and communication of disaster science.
Learn more: <https://www.bosai.sfc.keio.ac.jp/>
- General hospital is available across the street.





Student Life & Health

7:00

I wake up, have my morning coffee, and read the news. I live at a dorm near the station, so depending on the weather, I take the bus or ride a bike to campus.

9:00

As a Biomedical Science student, I have a mix of classes in English and Japanese. When I don't have on-campus lectures, I take my online classes in a group study room at the Media Center or, on sunny days, I sit by Kamoike. Every inch of SFC is a classroom in itself!

12:00

Every student's favorite time of the day: lunch break! I meet up with my friends and we take turns trying out menu items at the cafeteria, Ladybird café, and Subway.



13:00

During my free periods, I like to go to the campus gym to take a break from schoolwork. I find myself concentrating in lectures better after a good workout! Other times, I do volunteer work for Japanese organizations that equip disadvantaged sectors with the opportunities they need to incite positive change.

15:00

The Advanced Biosciences Seminar meets twice per week! On Tuesdays, expert scientists present a wide array of leading research and scientific frontiers for us to widen our horizons. On Fridays, I consult my professors to discuss research opportunities as well as my own experimental activities.



18:00

I like to keep busy with extracurriculars, too! I serve as the Vice President of the Association for International Students (AIS), as well as a member of the Kenyukai Kendo circle.



20:00

After a long school day, I unwind by listening to jazz music, watching lifestyle vlogs, and having dinner with friends at the dorm cafeteria. I also get in touch with loved ones from back home to complete my day!



Lianne

Faculty of Environment and Information Studies
Enrolled in 2020

While the Keio education gives me the push and skillset I need to be in the forefront of the sciences, it is in SFC where I am presented the opportunity to see the world differently.

I've always known that I wanted to be a scientist, even before matriculating to SFC, but what I didn't know was that science could be examined from lenses other than technical — especially when it comes to exploring and experiencing the fields of neuroscience and bioinformatics. My professors and research mentors have instilled in me the great value of childlike wonder to approach the world, and to be humane to solve its problems.

Keio has taught me to dare mighty things, in the hopes that, in the great that we create, we can influence the future.

Living Expenses /month (Example)

Rent	¥60,000
Food	¥20,000
Utilities (electricity/gas/water)	¥10,000
Insurance, medical expenses	¥3,000
Phone	¥3,000
Books	¥5,000
Transport	¥5,000
Hobbies, entertainment	¥8,000
Miscellaneous expenses	¥6,000
Total	¥120,000

Student Life

400+ official student's organizations (Circles and Clubs)

About **96%**
students will join
the circles or clubs!!

The Keio Arts and Culture Federation

- **90** organizations that encourage cultural literacy and social awareness.

The Keio University Athletics Association

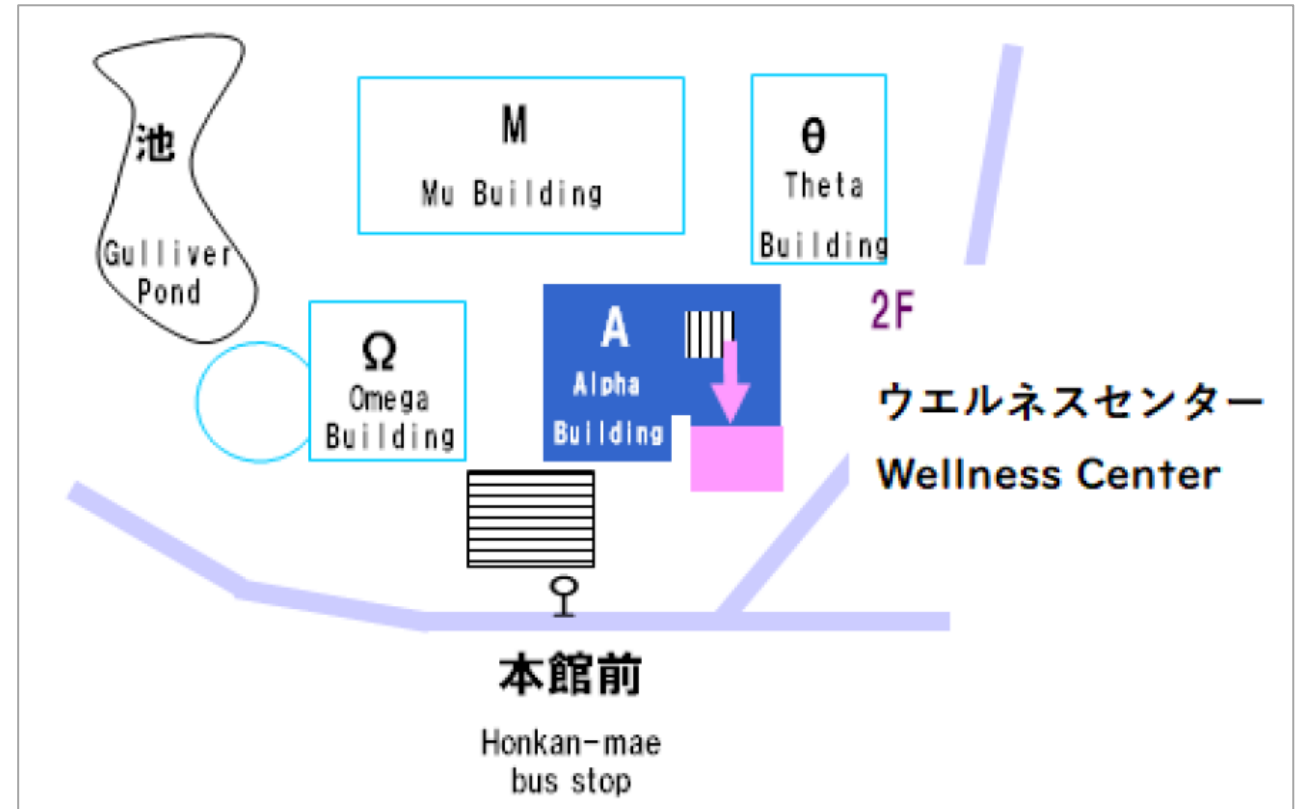
- **40** athletic teams, coached by professional staff and receiving all kind of support they offer



Student Health

- **Medical Treatment at Campus Wellness Center**
(weekdays, 9:00 - 17:30)
- **Keio Gijuku Clinics:**
hcc.keio.ac.jp/en/clinic/index.html

About more



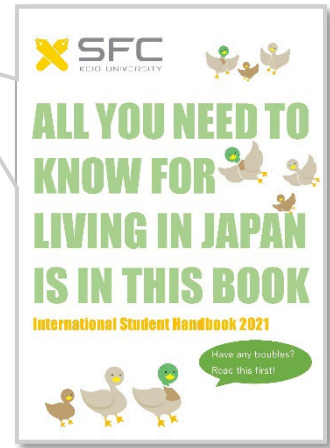
Support

Career Support

- Employment assistance events
- Assistance with application process
- Introduction to Keio alumni
- Information about job and career fairs
- Information about job offers

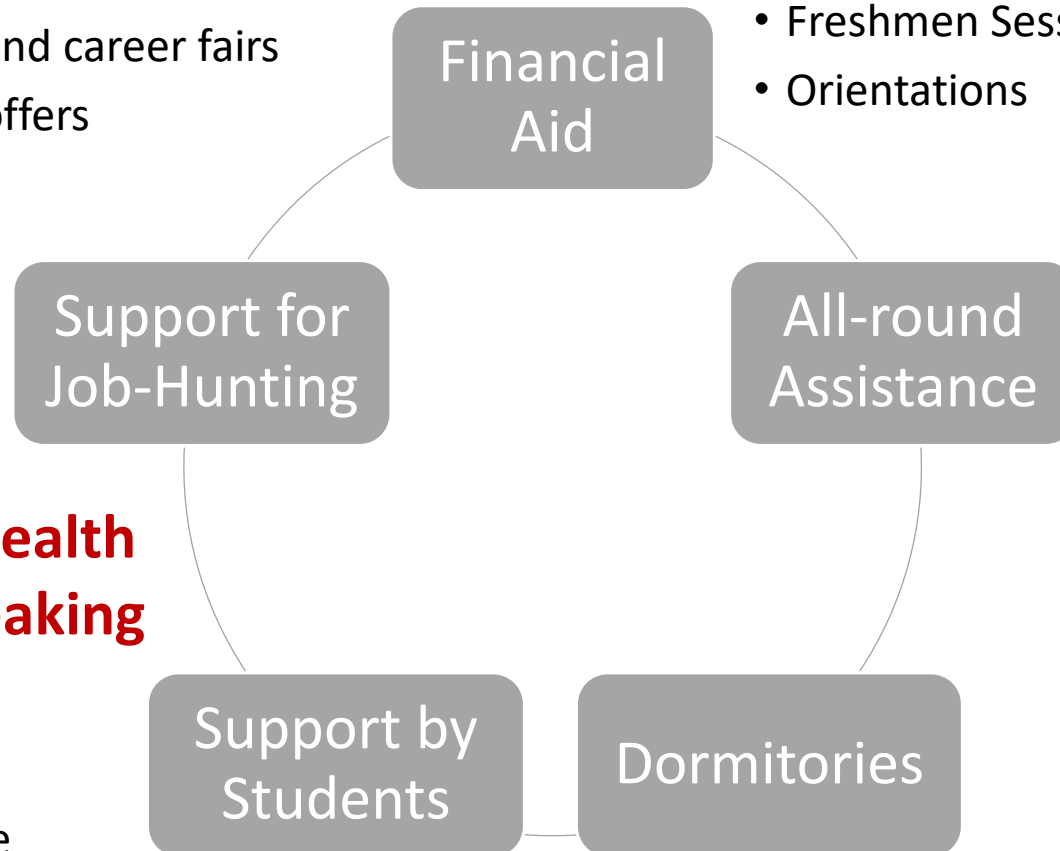
Various information before and after arrival

- Webpage for Successful Applicants
- Newsletter
- Handbook for International Students
- Freshmen Session
- Orientations



Mental & Physical Health support/English-speaking Counselor

- Health Center
- Student Health Insurance



After-arrival support

- Support for finding housing
- Support for paperwork (Real estate agency, City Hall, account set-up, etc.)
- Help with various registration procedures
- Everyday-life support

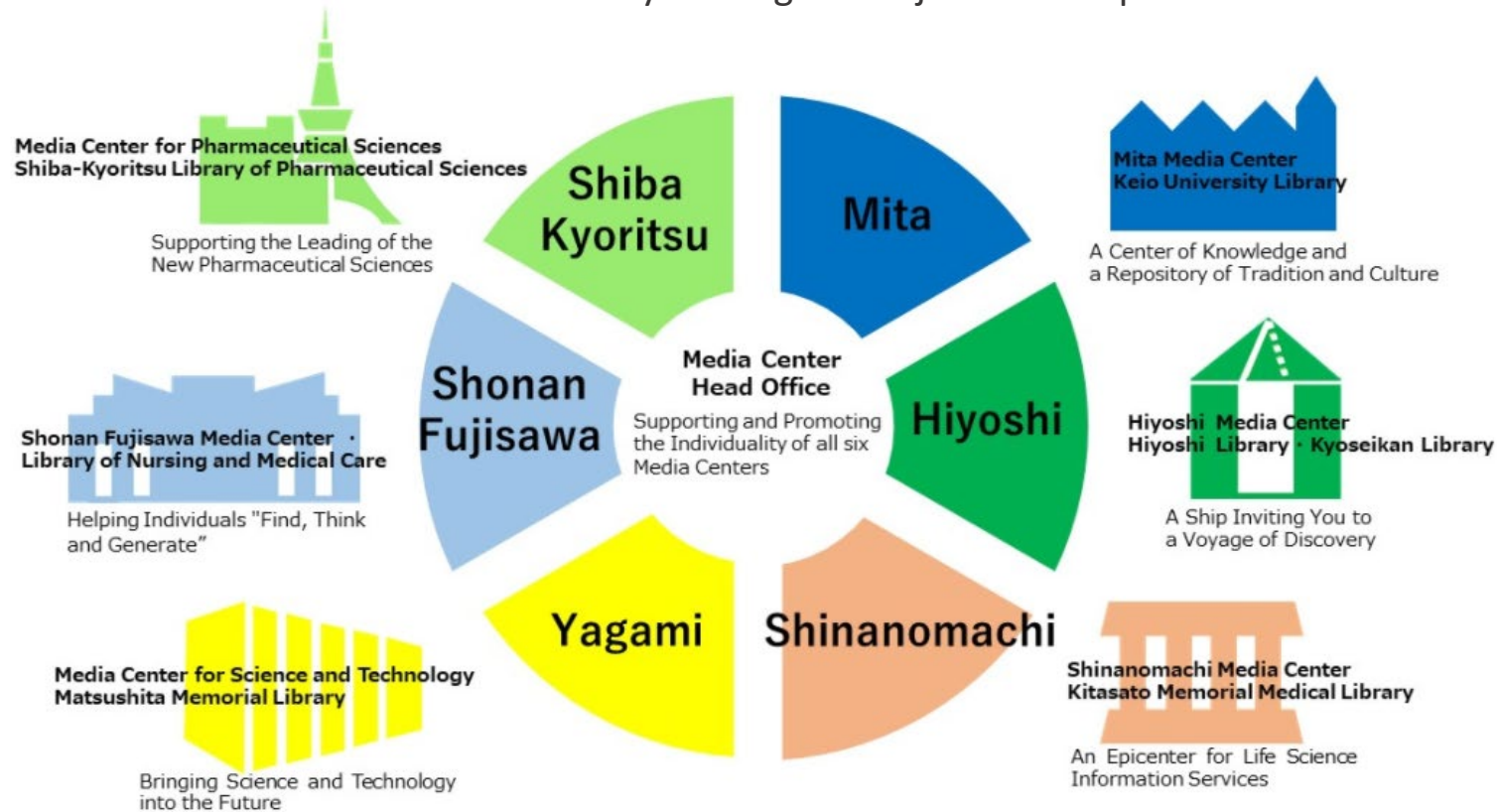
An aerial night view of a modern university campus. The foreground shows a large, multi-story building with a flat roof and several windows illuminated from within. To the right, another building with a grid of windows is visible, some of which are lit. The campus is surrounded by green trees and walkways. In the background, a city skyline is visible under a dark sky, with a large, vibrant firework display in shades of red, pink, and blue exploding in the upper left quadrant. The text "SFC Research" is overlaid in a large, black, handwritten-style font across the center of the image.

SFC Research

Unique Facilities at SFC

Media Center

Keio University libraries, also called Media Centers, are located on each campus of the University. Besides numerous library materials and digital contents, we also provide various services online, both from on and off campus. Each Media Center is operated individually. However, each interacts with other Media Centers to support academic and educational activities, as well as medical practices of Keio University. We established an agreement with Waseda University libraries in 1986. Since then, we have formed a partnership, eventually leading to the joint development of current library system.



Keio University libraries are also known as "Media Centers."



Unique Facilities at SFC



Fabrication Laboratory

Keio SFC was the first academic campus in Japan to provide free Internet environment to all the students. Lots of creative talents with digital skills have been nurtured here since 1990. Recently, digital creations are immersing into the real world. Self-driving cars, 3D printers, student-built architecture, wearable fashion, health-care devices, drones, agriculture sensing and more are highlighted topics. Through those activities, we realized that the new shape of creativity is about to appear. We call it "Fab"- that is for bridging digital and physical worlds.

Unique Facilities at SFC

Student Build Campus

As part of the *Miraisozojuku* project, Student Built Campus (SBC) was established by students, faculty members, and alumni in 2015. Students and faculty members of the SBC Joint Seminar are taking the lead in shaping a new campus in the East Zone under the concept of "Creating the Campus of the Future with Our Own Hands."



Unique Facilities at SFC

SFC Innovation Village

Keio Fujisawa Innovation Village, which opened in March 2006, is a collection of companies and organizations aimed to commercialize the results of research carried out at SFC. Our booth has details of comprehensive support provided in facilities and the rich infrastructure, as well as such items as details of resident companies and information about their business activities.

Student Voice

**Manthata Thakgatso William (from South Africa)
Faculty of Environment and Information Studies**

William says there are many places on campus to turn to for advice on his venture, including his business professor, who sits down with him for one-on-one sessions. But he also relies on fellow student entrepreneurs, including one who sells curry on campus. Finally, he notes the importance of the Keio Fujisawa Innovation Village (SFC-IV), a facility for trying out new business ideas that puts students in touch with potential investors.

► Read more

<https://www.sfc.keio.ac.jp/en/voices/pmei/>



Unique Facilities at SFC


S-face

Keio University is carrying on characteristic and distinctive education and research activities on the basis of dynamic thinking, guided by the “spirit of Jitsugaku”, or “practical science”. Forming part of it is the Shonan Fujisawa Campus (SFC), a research setting creating a constellation of innovations rooted in interdisciplinary fusion. The website introduces representative researchers from SFC.

<https://sface.sfc.keio.ac.jp/>

SFC Faculty Profiles Database:

https://www.sfc.keio.ac.jp/faculty_profile/en/

<p>#030</p> <p>Revealing the Relationship Between Work, Family and Leisure, and Aiming for the “Three HP” of Working People</p> <p> × Akihito Shimazu</p> 	<p>#029</p> <p>From Basic Research to Business Applications Making Meteorology More User-Friendly</p> <p> × Yoshiaki Miyamoto</p> 
<p>#028</p> <p>Toward a Society for Aging Peacefully at Any Place of Residence</p> <p> × Hiroki Fukahori</p> 	<p>#027</p> <p>Building a Bridge with the Changing Society of Indonesia</p> <p> × Yo Nonaka</p> 
<p>#026</p> <p>The Spread of FabLabs and 3D Printers Began in the 2010s, What's to Follow?</p> <p> × Hirova Tanaka</p> 	<p>#025</p> <p>Sustainable Land Use Is Needed Based on Ecosystems</p> <p> × Tomohiro Ichinose</p> 
<p>#024</p> <p>Collecting Examples of Korean throughout the World to Gain a Deeper Understanding of the Ethnic Koreans</p> <p> × Takeya Takagi</p> 	<p>#023</p> <p>Understanding the Very Matter of the Brain through Measuring Brain Information, and Analyzing it Mathematically</p> <p> × Atsushi Aoyama</p> 